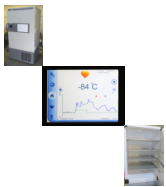


Thermo Scientific Model UXF60086D60 Revco UxF -86°C Upright Ultra-Low Temperature Freezer



Like New with Color Touchscreen

Rating: Not Rated Yet

Price

Sales price \$9,895.00

Tax amount

[Ask a question about this product](#)

Manufacturer [Thermo Scientific](#)

Description

Store and protect the optimum capacity of the most critical samples with Thermo Scientific™ Revco™ UxF ?86°C Upright Ultra-Low Temperature Freezers. These freezers achieve outstanding thermal performance, safety and security through state-of-the-art engineering. These refrigerators are designed to maximize temperature uniformity and sample storage while minimizing energy use. Choose from five high density capacities.

This unit has a NEW stage 1 compressor installed and tested.

28.8 cu. ft., 815L

208 to 230V 60Hz

NEMA 6-15

Capacity (English) Shelf 245 lb.

Backup Systems CO2 or LN2 Optional

Capacity (Metric) Shelf 388kg

2ml Vial Capacity per Freezer 60000

Access Security KeyLock Standard, Padlock Compatible, Key Card Optional

Chart Recorder 7-day ink or inkless Optional

Certifications/Compliance cULus, CE listed

Data Outputs RS-485, 4-20mA, dry contacts - standard

Description Capacity: 28.8 cu. ft. (815.1L); Holds 600 boxes; 208-230V/60Hz

Amperage 9A

Capacity 28.8 cu. ft., 815L

Capacity (English) 28.8 cu. ft.

Capacity (Metric) 815L

Display Touch ScreenLCD

Dimensions (L x W x H) Exterior 37.6 x 43.6 x 78 in. (96 x 111 x 198cm)

Dimensions (D x W x H) Interior 28.3 x 34.4 x 51.2 in. (72 x 87 x 130cm)

Hertz 60Hz

Holds 600 boxes

Insulation Vacuum Panel and Water Blown Foam

Plug Type NEMA 6-15

Shipping Weight (English) 854 lb.

Shelves 4

Product Name Revco

Shipping Weight (Metric) 388kg

Temperature Range -50° to -86°C

Temperature Range (Metric) -50°C to -86°C

Type Ultra Low Freezer, Upright

Voltage 208 to 230V

Doors Single

Door Opening Recovery 33 min.

Electrical Requirements 208 to 230V 60Hz

Footprint (English) 11.38 sq. ft.

Energy Usage 17/21.3kW-hr/day

Health Monitoring On Screen,Log File

Footprint (Metric) 1.06 sq. meters

Inner Doors 5

Interior Painted Steel - Standard, Stainless-steel - Optional

Line Voltage Indicator Line voltage and Buck/Boost

Operating Modes High Performance or Energy Efficiency

On-Board Datalogging Standard

Peak Variation at -80C +2.9/-4.9°C

Regulatory Approvals UL

Smart View Compatibility SmartView Compatible

Setpoint Security Standard - Individual user names and passwords

Vial to Energy Ratio 1.39 watts/100mL vials (box) Vial to Footprint Ratio (English) 5.272 vials/sq. ft

Vial to Footprint Ratio (Metric) 56.604 vials/cu. m

Voltage Compensation Buck/Boost

Warm up Time -80 C to -50C 240 min.

Weight (English) 854 lb.

Weight (Metric) 388kg

Water Cooled Optional

Warranty

Product Line Revco